



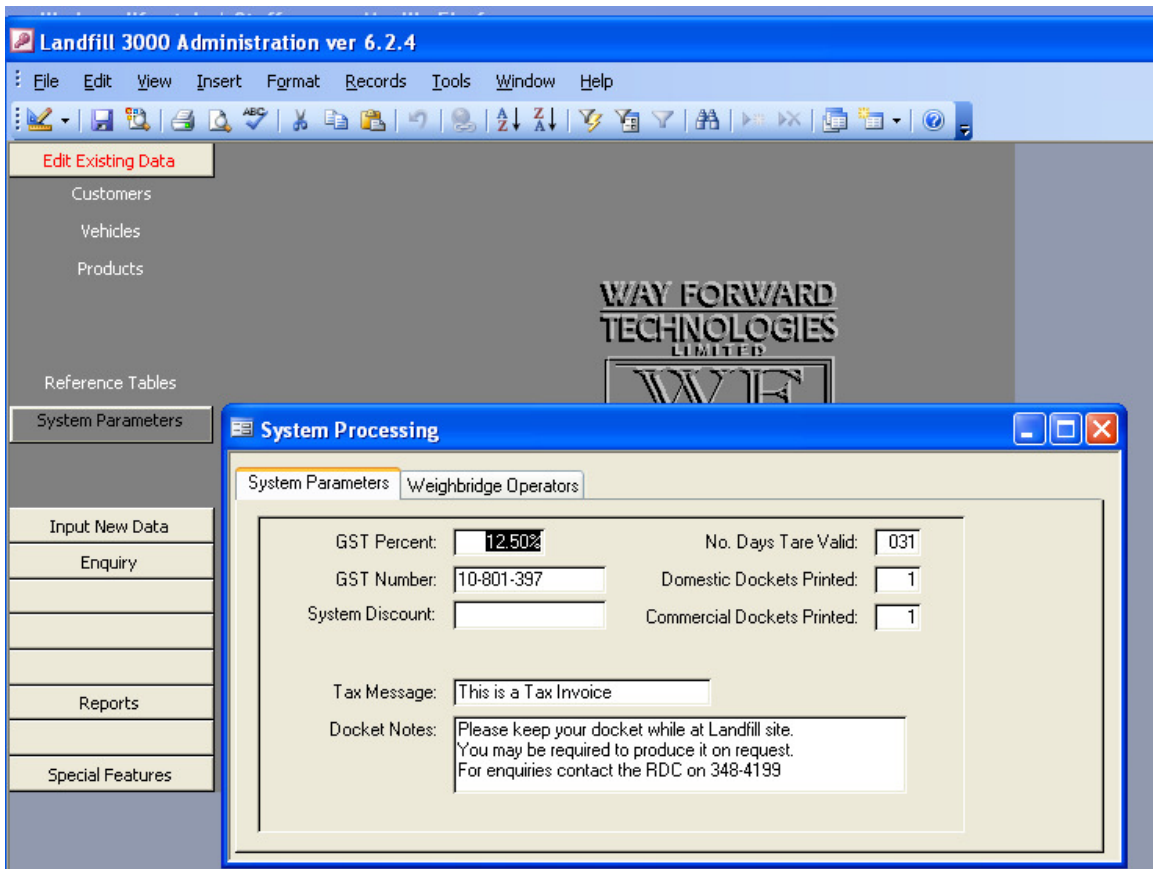
1st October 2010 GST Increase

As of 1 October 2010 the GST rate in New Zealand will increase from 12.5% to 15%.

This is a note on how to effect that change.

The software for this test was run on
Weighbridge Version 6.03.19
Data Maintenance 6.2.4

GST is changed on the Data Maintenance System as below.



This should be done on the September 30th update to be ready for the morning of October 1st.

Should you need to Edit **ANY** September transactions during October you should change the GST back to 12.5%. Change the transaction without updating the Weighbridge System (Remote)
Make the transaction changes and return GST to 15%.

Please Note:

A zip file for update is available to all Version 6.00.00 users.
Email peterok@wft.co.nz

For any additional questions or queries contact:

Peter O'Keefe
Way Forward Technologies Limited
021-426-364